



1030 P

Codice : 1030 P
Code :

Tipologia: LED
Tipology :

Materiale: Alluminio
Material :

Lampadina: 350 mA - 1W 3700° K
Bulb :

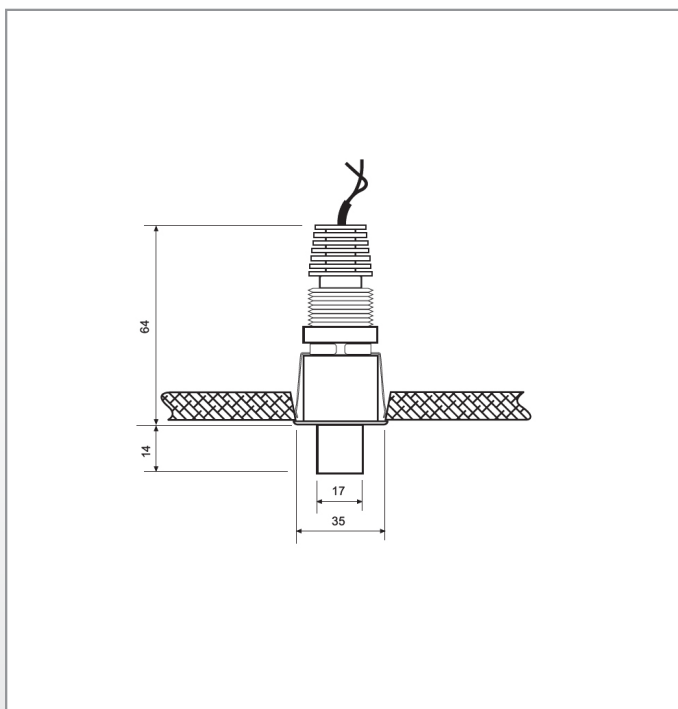
Protezione grado IP: 40
IP grade :

Diametro foro incasso: 29 mm
Ceiling cut out :

Accessori: 0102 - 330
Accessories :

Finiture:
Finishes :

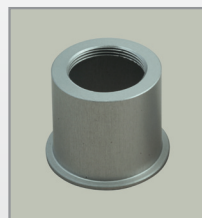
.01 Bianco .31 Cromato .32 Nickel satinato
.01 White .31 Chromium Plated .32 Nickel matt.



CE IP 40

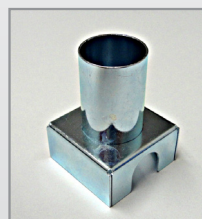


29 mm foro a incasso | Ceiling cut out



Art. 0102

Adattatore per doghe
Assembly ring for metallic ceilings



Art. 330

Cassaforma
Wallbox